

YARD DUTY AND SUPERVISION POLICY



HELP FOR NON-ENGLISH SPEAKERS

If you need help to understand the information in this policy, please contact Selby Primary School on 03 9754 2675 or selby.ps@education.vic.gov.au.

PURPOSE

To ensure school staff understand their supervision and yard duty responsibilities.

SCOPE

This policy applies to all teaching and non-teaching staff at Selby Primary School, including education support staff, casual relief teachers and visiting teachers.

POLICY

Appropriate supervision is an important strategy to monitor student behaviour and enables staff to identify and respond to possible risks at school as they arise. It also plays a vital role in helping schools to discharge their duty of care to students.

The principal is responsible for ensuring that there is a well organised and responsive system of supervision and yard duty in place during school hours, before and after school, and on school excursions and camps and other school activities.

School staff are responsible for following reasonable and lawful instructions from the principal, including instructions to provide supervision to students at specific dates, times and places. Supervision should be undertaken in a way that identifies and mitigates risks to child safety.

1. Before and after school

Selby Primary School's grounds are supervised by school staff from 8:50am until 3:45pm. Outside of these hours, school staff will not be available to supervise students. The school will regularly inform parents/carers of the precise times during which the school's grounds will be monitored (e.g. in the school newsletter each term).

After school, school staff will be available to supervise the carpark.

Parents and carers should not allow their children to attend Selby Primary School outside of these hours. Families are encouraged to contact the school for more information about the before and after school care facilities available to our school community.

If a student arrives at school before supervision commences at the beginning of the day, the Principal or nominee staff member will, as soon as practicable, follow up with the parent/carer to:

- advise of the supervision arrangements before school
- request that the parent/carer make alternate arrangements.

If a student is not collected before supervision finishes at the end of the day, the Principal or nominee staff member will consider whether it is appropriate to:

At Selby Primary School we endeavour to create and maintain a nurturing learning environment which fosters positive student participation through our values of

CONFIDENCE

PERSONAL BEST

RESILIENCE

RESPECT

- direct the student to the office waiting area
- attempt to contact the parents/carers
- attempt to contact the emergency contacts
- place the student in an out of school hours care program (if available and the parent consents)
- contact Victoria Police and/or Child Protection to arrange for the supervision, care and protection of the student.

2. Yard duty

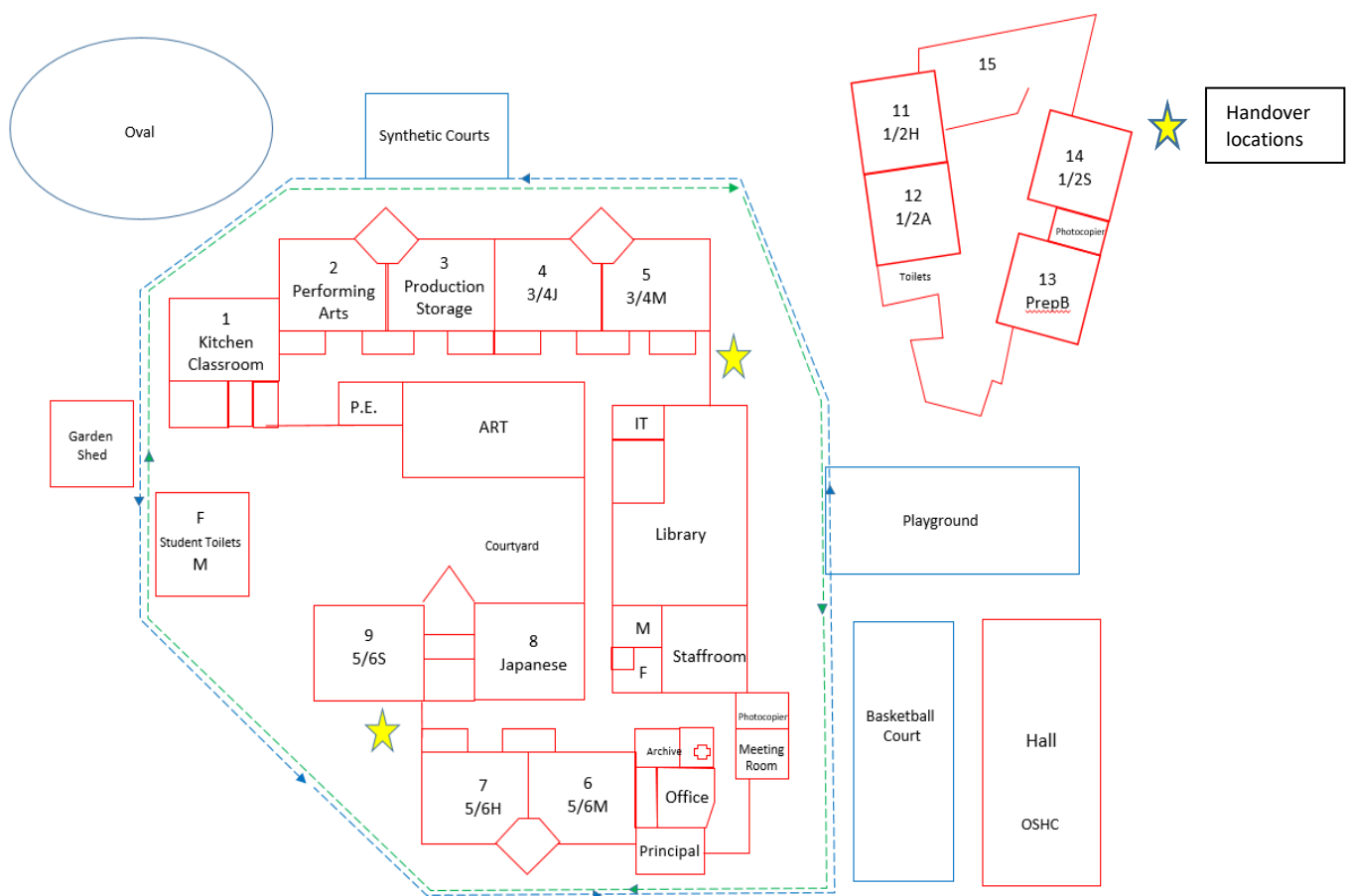
All staff at Selby Primary School are expected to assist with yard duty supervision and will be included in the weekly roster.

The Principal [*or alternative nominee*] is responsible for preparing and communicating the yard duty roster on a regular basis.

At Selby Primary School, two school staff will be at a time will walk around the school.

Yard duty zones

The designated yard duty areas for our school (as at Term 3, 2023) are:



Yard duty equipment

School staff must:

- wear a provided safety/hi-vis vest whilst on yard duty. Safety/hi-vis vests will be stored in each classroom.
- carry the yard duty first aid bag at all times during supervision. The yard duty first aid bag will be stored in each classroom.

At Selby Primary School we endeavour to create and maintain a nurturing learning environment which fosters positive student participation through our values of

CONFIDENCE

PERSONAL BEST

RESILIENCE

RESPECT

- Be familiar with the yard duty information pack containing student health and safety information stored on the bumbag.

Yard duty equipment must be returned after the period of supervision to the classroom.

Yard duty responsibilities

Staff who are rostered for yard duty must remain in the designated area until they are replaced by a relieving staff member.

During yard duty, supervising staff must:

- methodically move around the designated zone ensuring active supervision of all students in a clockwise or anticlockwise position, to ensure that all areas are within line of sight to at least one yard duty teacher at a time – as per map above
- where safe to do so, approach any unknown visitor who is observed on school grounds without a clear legitimate purpose, and ensure they have a visitor pass and have signed in (excluding drop off and collection periods)
- be alert and vigilant
- intervene immediately if potentially dangerous or inappropriate behaviour is observed in the yard
- enforce behavioural standards and implement appropriate consequences for breaches of safety rules, in accordance with any relevant disciplinary measures set out in your school's *Student Engagement* policy
- ensure that students who require first aid assistance receive it as soon as practicable
- log any incidents on Compass as appropriate

If being relieved of their yard duty shift by another staff member (for example, where the shift is 'split' into 2 consecutive time periods), ensure that a brief but adequate verbal 'handover' is given to the next staff member in relation to any issues which may have arisen during the first shift. This is to be done in a designated handover area.

If the supervising staff member is unable to conduct yard duty at the designated time, they should contact the Principal/Principal's nominee with as much notice as possible prior to the relevant yard duty shift to ensure that alternative arrangements are made.

If the supervising staff member needs to leave yard duty during the allocated time, they should contact the Principal/Principal's nominee but should not leave the designated area until the relieving staff member has arrived in the designated area.

If a relieving or next staff member does not arrive for yard duty, the staff member currently on duty should send a message/call Principal/office and not leave the designated area until a replacement staff member has arrived.

Students will be encouraged to speak to the supervising yard duty staff member if they require assistance during recess or lunchtime.

3. Classroom

The classroom teacher is responsible for the supervision of all students in their care during class.

If a teacher needs to leave the classroom unattended at any time during a lesson, they should first contact another member of their team for assistance. The teacher should then wait until another staff member has arrived at the classroom to supervise the class prior to leaving.

At Selby Primary School we endeavour to create and maintain a nurturing learning environment which fosters positive student participation through our values of

CONFIDENCE

PERSONAL BEST

RESILIENCE

RESPECT

4. School activities, camps and excursions

The principal and leadership team are responsible for ensuring that students are appropriately supervised during all school activities, camps and excursions, including when external providers are engaged to conduct part or all of the activity. Appropriate supervision will be planned for school activities, camps and excursions on an individual basis, depending on the activities to be undertaken and the level of potential risk involved, and will follow the supervision requirements in the Department of Education [Excursions Policy](#).

5. Digital devices and virtual classroom

Selby Primary School follows the department's [Digital Technologies - Responsible Use Policy](#) with respect to supervision of students using digital devices.

Selby Primary School will also ensure appropriate supervision of students participating in remote and flexible learning environments while on school site. In these cases, students will be supervised in their classroom, break out spaces or common areas.

6. Students requiring additional supervision support

Sometimes students will require additional supervision, such as students with disability or other additional needs. In these cases, the principal or delegate will ensure arrangements are made to roster additional staff as required. This may include on yard duty, in the classroom or during school activities.

7. Supervision of student in emergency operating environments

In emergency circumstances our school will follow our Emergency Management Plan, including with respect to supervision.

In the event of any mandatory period of remote or flexible learning our School will follow the operations guidance issued by the Department.

8. Other areas requiring supervision

At Selby Primary School students expected to go in pairs during class time to the outside bathrooms or in threes if delivering a student to the office.

COMMUNICATION

This policy will be communicated to our school community in the following ways:

- Included in staff induction processes
- Discussed at staff briefings or meetings, as required
- Included as a reference in our school newsletter on regular basis
- Made available in hard copy from school administration upon request

Information for parents and students on supervision before and after school is available on our school website and parent reminders are sent at the beginning of each term in our school newsletter.

FURTHER INFORMATION AND RESOURCES

This policy should be read in conjunction with the following policies on the Department's Policy and Advisory Library (PAL):

- [Child Safe Standards](#)
- [Digital Technologies - Responsible Use](#)

At Selby Primary School we endeavour to create and maintain a nurturing learning environment which fosters positive student participation through our values of

CONFIDENCE

PERSONAL BEST

RESILIENCE

RESPECT

- [Duty of Care](#)
- [Excursions](#)
- [Supervision of Students](#)
- [Visitors in Schools](#)

POLICY REVIEW AND APPROVAL

Policy last reviewed	March 2026
Approved by	Principal
Next scheduled review date	Before March 2028

This policy will also be updated if significant changes are made to school grounds that require a revision of Selby Primary School's yard duty and supervision arrangements.

At Selby Primary School we endeavour to create and maintain a nurturing learning environment which fosters positive student participation through our values of

CONFIDENCE

PERSONAL BEST

RESILIENCE

RESPECT