



MARCH 15TH 2023 | ISSUE 4

THE BRIDGE

Selby Primary School Newsletter



A SNEAK PEEK INSIDE THIS ISSUE:

Important Dates — Page no. 2

Selby Snippets — Page no. 3

Sport News — Page no. 4

Class news — Page no. 5

Treasure Hunt — Page no. 8

Principals Report

Scott Burton

How did it get so late so soon. It's night before it's afternoon. December before it's June. My goodness, how the time has flown. How did it get so late so soon?" - Dr. Seuss

During the last few weeks, students have been competing in swimming and tennis at District and Division level. As well as displaying their sporting talents, I have heard great reports of how well the students have represented the school.

I am pleased to report that our tutoring program is up and running this year and would like to welcome Roseanne Cooke who will be working in this space this year.

We hosted our Welcome to Selby Picnic a couple of weeks ago, and we were blessed; with dry weather, high attendance, tuneful music, funky dance moves and positive vibes. It was lovely to see the oval awash with community spirit as we welcomed the new school year in. A big thank you to Ms Ray and Ms Williams for the entertainment and the PFA for hosting the BBQ.



CALENDAR

Friday 24th March

Earth Hour

**Monday 27th March -
Wednesday 29th March**

Year 5/6 Portsea Camp

Tuesday 28th March

School Council

Thursday 30th March

EDEC Athletics

Thursday 6th April

Last day Term 1 School finishes at
2.30pm

Monday 24th April

1st day Term 2

Tuesday 25th April

Anzac Day Public Holiday

Wednesday 10th May

Mothers Day Stall



2 Morley St, Selby (03) 97542675

e: selbyps@education.vic.gov.au www.selbyps.vic.gov.au

Before/After School Care: 0434 422 455 1300 105 343



Selby Snippets

Earth Hour

Selby Primary has signed up to #SwitchOff. This year Earth Hour Schools Day is on Friday 24 March! Join us alongside hundreds of schools in Australia and thousands worldwide, calling for stronger action against climate change and biodiversity loss. Sign up today at earthhour.org.au. Selby will be switching off for the last session of the day and will hold our assembly outside (weather permitting). Refer to poster on back pages of this edition for more information.

Kitchen Classroom

Thank you to everyone who donated goods on our Stock the Pantry Day! We collected many useful items as well as raising \$92.10 towards the running of the Kitchen Classroom. If you ever have an overabundance of produce from your gardens that you would like to share with our Kitchen Classroom, then please let Monica Dryden know. While we work to establish a more productive vegetable garden, it will help bring awareness to our students as to the seasonal produce that is available in our region. If you have any available time to help with maintaining and monitoring the stock in the kitchen classroom, please contact or come and see me.





SPORT NEWS

EDEC TENNIS

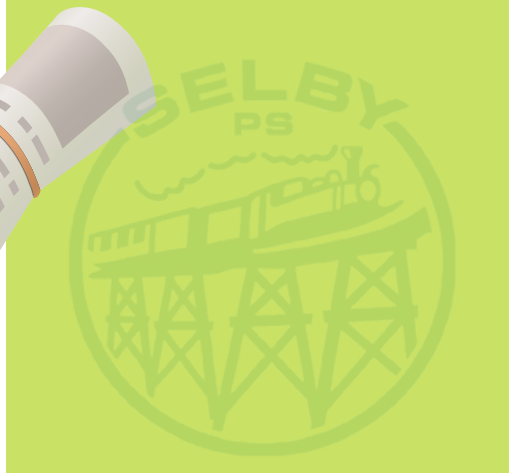
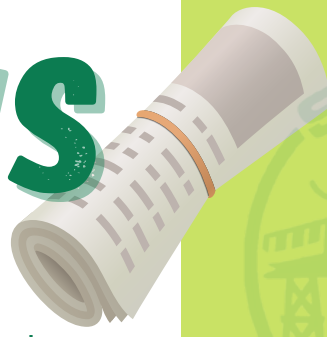
Last week 10 of our Selby students participated in the EDEC Tennis at Emerald. Our kids displayed excellent sportsmanship and gave 100% throughout the event. I was so proud of them all! Stella played beautifully to qualify for the Division finals which will be held later this term. Reza showed his natural tennis flair combined with the determination to reach the semi-finals on the day. Well done everyone!

Division Swimming

Last Friday our super Selby Swimmers competed in the Division Swimming Championships at Croydon Pool. The girls swam courageously for our school, finishing 2nd in the 11 year girls freestyle relay, and 3rd in the 12/13 year girls freestyle relay. Maia also finished 3rd in her two individual events. Sensational swimming girls! Our 11 year girls relay team of Maia, Stella, Leila and Willow will now compete at the Regional Championships later this month!



PREP NEWS



We have been very busy in Prep. We had a great time at our team building incursion, in Kitchen Classroom and going on a 2D shape hunt last week. We loved the whole school treasure hunt that we earned for showing the school values at school.



1/2 SUPREME INCURSION FUN!



1/2 KITCHEN CLASSROOM

In the Kitchen Classroom last week, the 1/2 students used fruits and vegetables to represent them and their identity.



TREASURE

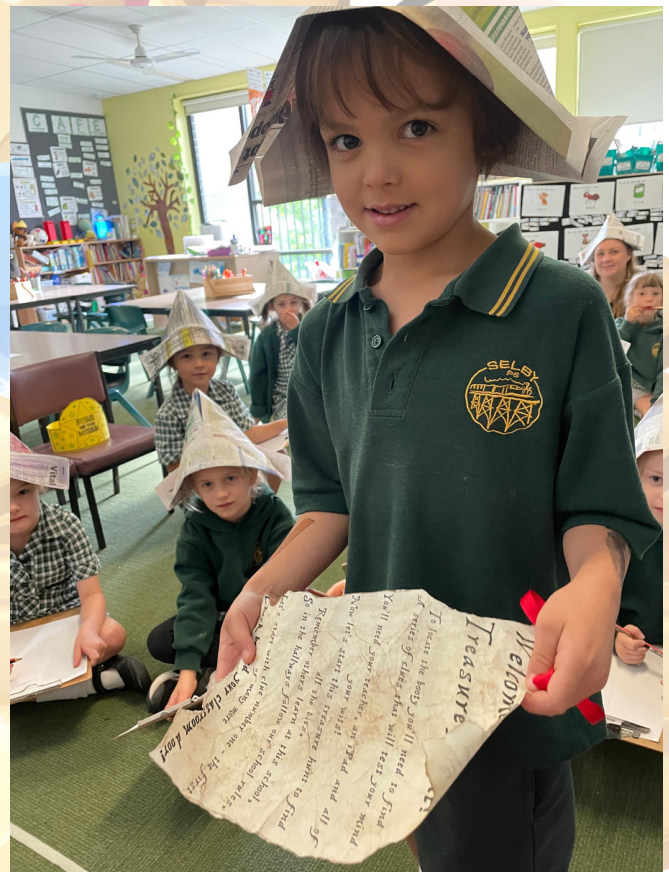
HUNT!

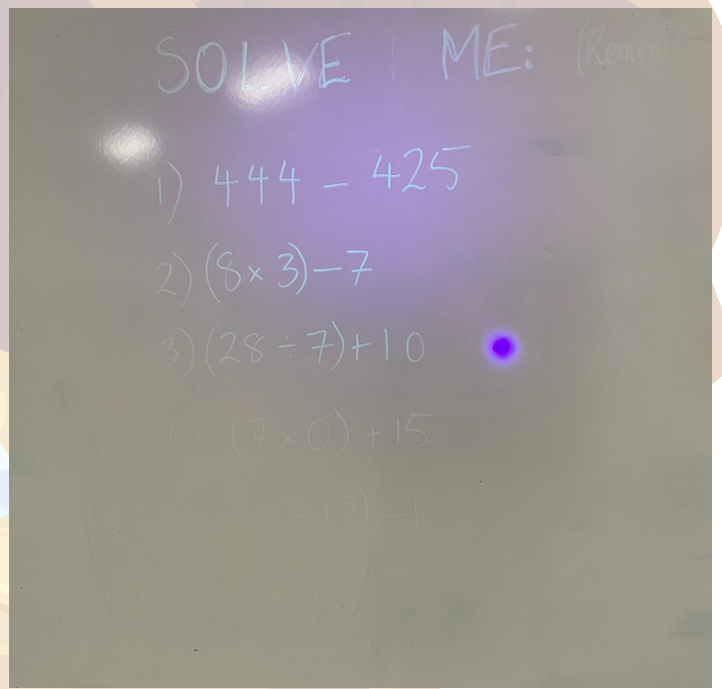
Last week, after working so hard to fill the **Personal Best** carriage on our SWBPS train, Selby Students earned their Treasure Hunt reward!

Junior school students followed riddles that took them all over the school to locate the clues and finally work out where the precious treasure was hidden.

Senior School students worked together in smaller groups to crack codes and puzzles in order to find their reward!

A great time was had by all and we are very impressed with the deductive skills of our Selby sleuths!







Good Book Awards

Prep B - Ray M - Personal Best

Congratulations Ray for always striving to achieve your Personal Best in your learning. You embrace your learning with enthusiasm and joy. It was a delight to see all your Personal Best pieces of work. Keep up the great work Ray!

1/2M - Jacob R - Personal Best

What an amazing effort you showed this week during spelling Jacob. Your extra knowledge about suffixes was very impressive and so helpful for the class. Fantastic work!

1/2R - Jeffrey L - Confidence

It was so fantastic to see you volunteer to do your 'Interview with a Family Member' first! You are always such a great role model for your peers. You, or should I say 'Dad', spoke so clearly, with confidence and enthusiasm whilst being interviewed during our presentations this week. We loved seeing you dress up as your dad.

3/4H - Ava M- Personal Best

Ava, it is truly a pleasure to have a student like yourself in 3/4H. I struggled to decide which value to award you because you show all of them each day! I chose PB in the end because your terrific work ethic and attitude to challenges is what really sets you apart. You're always willing to have a go and push through when it gets tough. With this attitude you'll go far!

5/6D - Sage S - Confidence

Congratulations Sage for chairing your first class meeting so successfully and with confidence as our SVT representative. You were fair and consistent with everyone who wanted to contribute to our discussion and moved the meeting along in an orderly way. Thanks Sage, keep up the fantastic effort as our SVT rep!



Respect Confidence Resilience Personal Best



Parents & Friends Association

Selby Primary School

Easter Raffle

It would be greatly appreciated if families could please donate Easter eggs, Easter themed items, baskets, ribbons or biodegradable wrapping to our annual Easter Raffle.

Please bring donations to the office up to **Monday 3rd April**. We ask that you check any used by dates on items that are donated as we won't be able to use anything that is out of date.

Raffle tickets will be available in the office and each student will receive a sheet to sell at home.

Drawn Thursday 6th April
Thank you for your support!
PFA 2023



Parents & Friends Association
Selby Primary School

Bakers Delight

EASTER ORDERING 2023

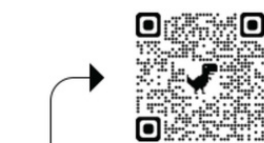
BAKERS DELIGHT FERNTREE PLAZA WOULD LIKE TO OFFER YOU THE OPPORTUNITY TO PURCHASE SOME DELICIOUS HOT CROSS BUNS WITH \$2 FROM EVERY ITEM SOLD BEING DONATED BACK TO OUR ORGANISATION!

Simply order your Hot Cross Buns on their website
www.bdfundraisingonline.com

by Thursday 23rd March

and your items will be delivered to the School for your collection on

Thursday 30th March

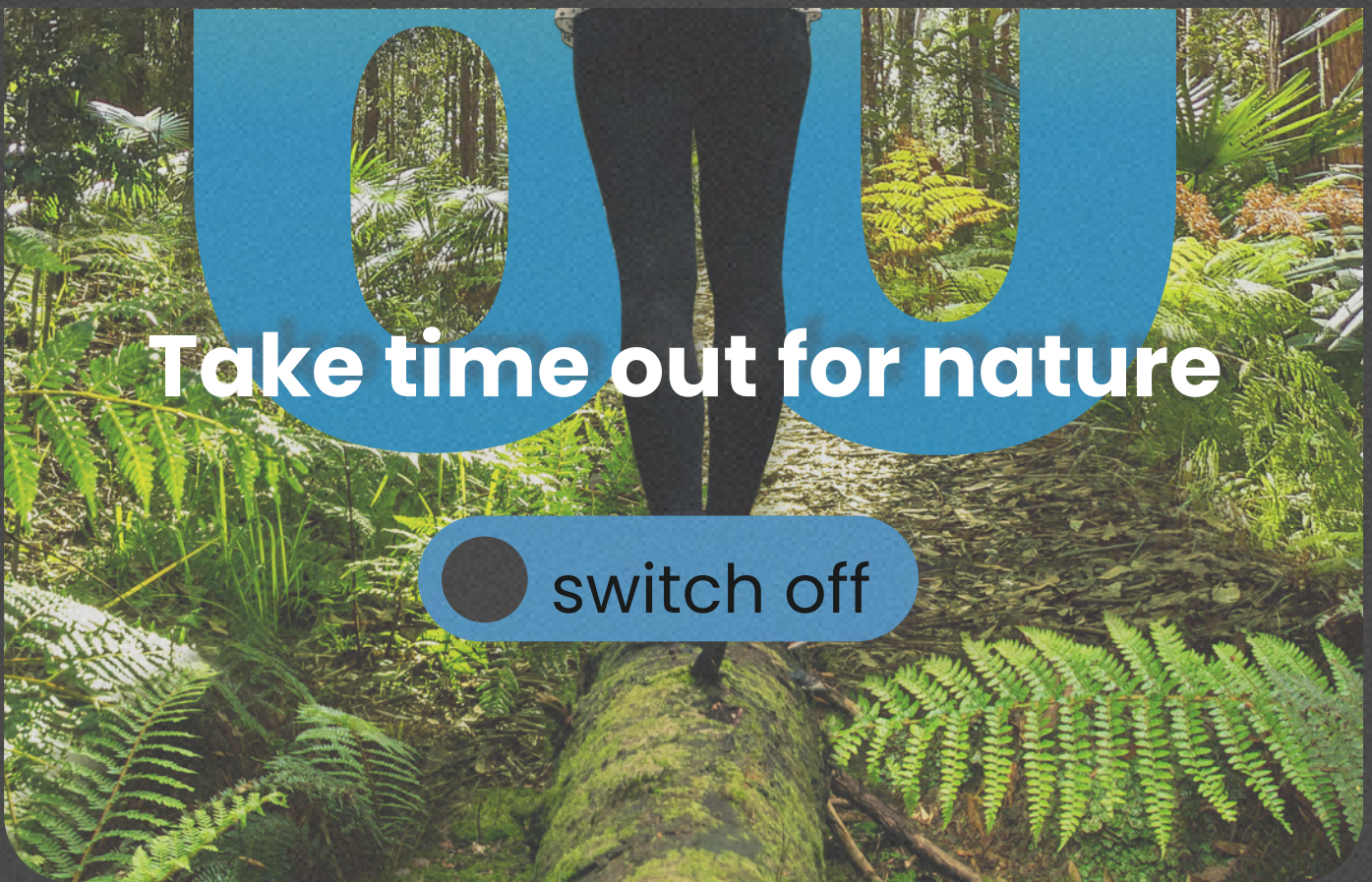


Scan Me!

When ordering online, please make sure you select Selby Primary School and enter your Child's name

Remember to ask family and friends if they would like to order some too! ☺





Take time out for nature

switch off



**We are switching off!
Friday March 24**

earthhour.org.au



Schools in Category 0, 1 and 2 on the Bushfire At-Risk Register

School preparedness and pre-emptive actions for the bushfire season

Schools and early childhood services undertake a range of activities each year to prepare for bushfires and grassfires.

The Department of Education conducts an annual fire risk assessment of schools and early childhood services. Those at the greatest levels of risk are published on the Bushfire At-Risk Register (BARR) and Category 4 list.

Schools at the highest levels of risk (Categories 0, 1 and 2) take pre-emptive actions on elevated fire danger days in their Local Government Area according to their fire risk category to minimise the risk of being caught in a fire in these conditions.

All schools and early childhood services listed on the BARR and Category 4 list will also close when a Catastrophic fire danger rating day is forecast in their fire weather district.

As part of preparing our school for the fire season, we have updated and completed our Emergency Management Plan and other relevant preparedness actions – such as reprioritising maintenance works that may assist in preparing for the threat of fire and clearing our facility's grounds and gutters.

What does this mean for our school?

Our school has been identified as being in one of the highest fire risk categories - (BARR 2).

Our school will enact its pre-emptive action plan for relocation, on a day forecasted as Extreme fire danger rating in our local government area (LGA), Yarra Ranges.

What is the department's policy?

The department's [Bushfire and Grassfire Preparedness Policy](#) requires schools at high risk of bushfire to enact pre-emptive action plans based on LGA-level fire danger forecasts. Conditions can vary significantly across the wider weather district, so using local forecasts helps us to respond appropriately to risks in our local area and maintain stability and educational continuity for our students and school community. This policy is consistent for all schools at high levels of risk and this approach is supported by emergency services.

The policy also requires that all schools and early childhood services on the BARR and the Category 4 list close when a Catastrophic fire danger rating day is forecast in their fire weather district. All school bus routes which travel in or through a district with Catastrophic fire danger must also be cancelled.

When will our school enact our pre-emptive action plan?

Our school will enact our pre-emptive plan to relocate to Heany Park Primary School on days when the fire danger forecast for our local government area, Yarra Ranges is Extreme.

Our school will use the LGA forecast confirmed by emergency services the day before an Extreme fire danger day in our LGA to trigger our plan. We will advise you when we are enacting our pre-emptive action plan. Please be aware that no one will be on site on days where the school has enacted this plan.

What do we do when our LGA has a different fire danger rating to the wider fire weather district?

As we respond to local conditions, there may be days during the fire season when our fire weather district, [insert name of fire district here] is forecast as an Extreme fire danger rating, but our LGA is at a lower level of fire danger. On these days our school operations will continue as normal, however we will be taking action in line with fire services advice by:

- checking our Emergency Management Plan and taking any necessary preparedness actions
- actively monitor our local conditions and warnings
- having plans and procedures in place for if a fire starts to support us to take immediate action.

Whilst our school will continue to operate, we encourage our school community to consider their own bushfire survival plan and reassess any travel through bushfire risk areas. We encourage you to follow your family bushfire survival plan and the advice of emergency services.

There may also be days where our LGA is forecast as Extreme fire danger, but the Central Fire District is not. On these days we will enact our pre-emptive action plan.

When will our school be closed due to Catastrophic fire danger?

Our school will also close on a day forecasted as Catastrophic fire danger rating in the Central fire district.

Closure of the school due to a forecast Catastrophic day will be confirmed on the day prior and we will provide you with advice before the end of the school day. Any information regarding potential or confirmed Catastrophic fire danger days will be communicated to you by the Compass Portal.

Once confirmed, the decision to close will not change, regardless of improvements in the weather forecast. This is to avoid confusion and help your family plan alternative care arrangements for your child. It is also important to be aware that:

- No one will be on site on days where the school is closed due to a forecast Catastrophic day.
- Out-of-school-hours care will also be cancelled on these days.
- All bus routes that travel through the Catastrophic area will be cancelled.
- School camps will be cancelled if a Catastrophic fire danger rating day is forecast for fire weather district in which the camp is located, or if the travel involves passing through areas that have Catastrophic fire danger.

Families are encouraged to enact their Bushfire Survival Plan on Catastrophic fire danger rating days. **On such days, children should never be left at home alone or in the care of older children.**

For those of us living in a bushfire prone area, the Country Fire Authority (CFA) advises that when Catastrophic days are forecast, the safest option is to leave the night before or early on the morning of the Catastrophic day.

What can families and the school community do to help us prepare?

- Ensure we have your current contact details, including your mobile phone numbers. Keep in touch with us by reading our newsletters, checking Compass and by talking to your child's teacher or any other member of the teaching staff about our emergency management plan.
- Make sure your family's bushfire survival plan is up-to-date and includes alternative care arrangements in the event that our school is relocated due to elevated fire danger or closed due to a Catastrophic fire danger. Further information can be found on the CFA's website.
- Enact your family's bushfire survival plan if your own triggers are met. Our school community may be spread out across many areas and some families may be at higher risk than others. Your family's safety is critical, so please let us know if you are enacting your bushfire survival plan and if your children will be absent on these days.
- If your child is old enough, talk to them about bushfires and your family's bushfire survival plan.

You can find more information on emergencies, and preparedness actions here:

- VicEmergency app – that can be downloaded on your mobile devices
- VicEmergency Hotline (1800 226 226)
- Website <https://emergency.vic.gov.au>
- Facebook (<https://www.facebook.com/vicemergency>)
- Twitter (<https://twitter.com/vicemergency>)
- ABC local radio, Sky News and other emergency broadcasters

Respect Confidence Resilience Personal Best